



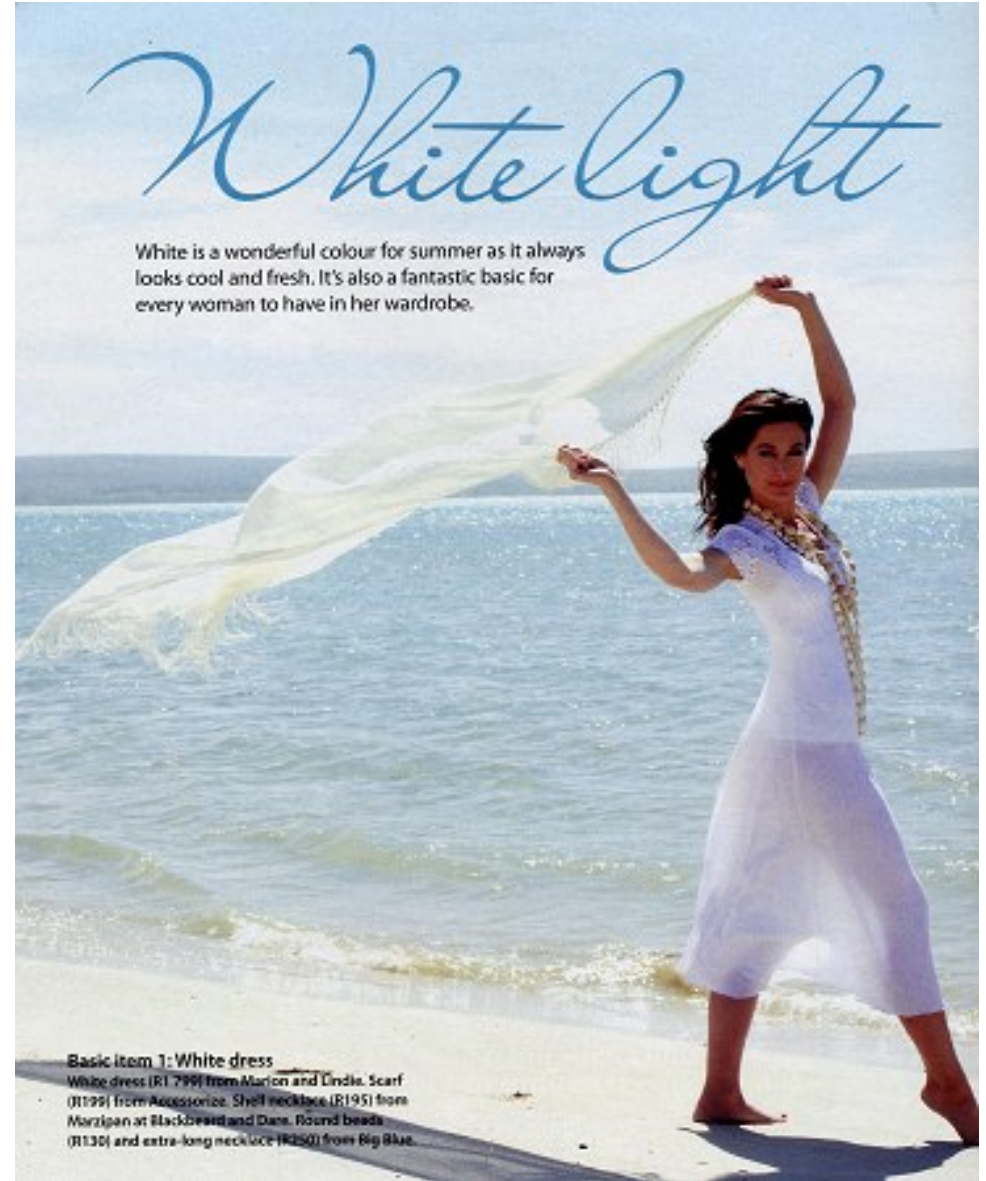
LISA KING

Height 5'6"/168cm Bust 34"/86cm B Waist 23.5"/60cm Hips 33.5"/85cm Dress 6 US/36 EU/8 UK Shoe 7 US/38 EU/5 UK Hair Light Brown Eyes Blue/Green



LISA KING

Height 5'6"/168cm Bust 34"/86cm B Waist 23.5"/60cm Hips 33.5"/85cm Dress 6 US/36 EU/8 UK Shoe 7 US/38 EU/5 UK Hair Light Brown Eyes Blue/Green



LISA KING

Height 5'6"/168cm Bust 34"/86cm B Waist 23.5"/60cm Hips 33.5"/85cm Dress 6 US/36 EU/8 UK Shoe 7 US/38 EU/5 UK Hair Light Brown Eyes Blue/Green



LISA KING

Height 5'6"/168cm Bust 34"/86cm B Waist 23.5"/60cm Hips 33.5"/85cm Dress 6 US/36 EU/8 UK Shoe 7 US/38 EU/5 UK Hair Light Brown Eyes Blue/Green



LISA KING

Height 5'6"/168cm Bust 34"/86cm B Waist 23.5"/60cm Hips 33.5"/85cm Dress 6 US/36 EU/8 UK Shoe 7 US/38 EU/5 UK Hair Light Brown Eyes Blue/Green



LISA KING

Height 5'6"/168cm Bust 34"/86cm B Waist 23.5"/60cm Hips 33.5"/85cm Dress 6 US/36 EU/8 UK Shoe 7 US/38 EU/5 UK Hair Light Brown Eyes Blue/Green

your style

Gorgeous colour not only makes your hair look more vibrant and healthy, it lifts your complexion. Here's how to use colour to make the most of your locks.

BY MARIANNE CAMPBELL.
PHOTOGRAPHS BY JONAN WILKE.

Your complete guide to HAIR COLOUR

THE CURRENT COLOUR TRENDS
For 2018, cooler shades are hot! Here's how to keep your colour up-to-date.

IF YOU'RE BRUNETTE: Cooler green-based browns are what you should be going for. The thinking is that these shades are more flattering and look more natural than reddish browns. Don't overdo the coolness – add highlights in warmer copper shades to keep your 'do looking lively.

IF YOU'RE BLONDE: Dabble in soft ash shades. Avoid anything too yellow or gold, as it tends to look brassy. And remember that your complexion is best suited to paler hair colours. Dark, saturated hair shades make blemishes and imperfections more noticeable, and darken under-eye circles.

IF YOU'RE RED: Redheads should also opt for cooler tones. Stashes (a streak of colour here and there) of pink and blue are popular right now. They're added in the thick of the hair, not on top, and become visible as you move, adding a 'coolness' to the overall look.

IF YOU'RE DARK: Stick to dark brown and black tones; anything too light looks fake and 'out of the box'. At the moment, cool black tones are where it's at, so, if you colour your hair, choose a deep blue-black. ☺




LISA KING

Height 5'6"/168cm Bust 34"/86cm B Waist 23.5"/60cm Hips 33.5"/85cm Dress 6 US/36 EU/8 UK Shoe 7 US/38 EU/5 UK Hair Light Brown Eyes Blue/Green



LISA KING

Height 5'6"/168cm Bust 34"/86cm B Waist 23.5"/60cm Hips 33.5"/85cm Dress 6 US/36 EU/8 UK Shoe 7 US/38 EU/5 UK Hair Light Brown Eyes Blue/Green